



School year 2023-2024



www.forestalparktenerife.es

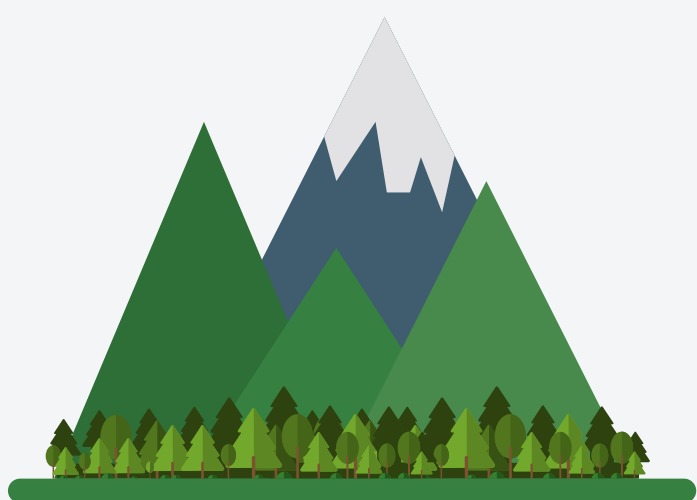


SCHOOL YEAR 2023 - 2024

The largest adventure park in the trees in the Canary Islands is located in the **Protected Landscape of Las Lagunetas (El Rosario, Tenerife)**.

Discover the incredible activities you can share with your students in the middle of nature, in the magnificent Canarian pine forest of Monte de La Esperanza.

Are you looking for a different outdoor space in Tenerife where you can continue learning with your students?



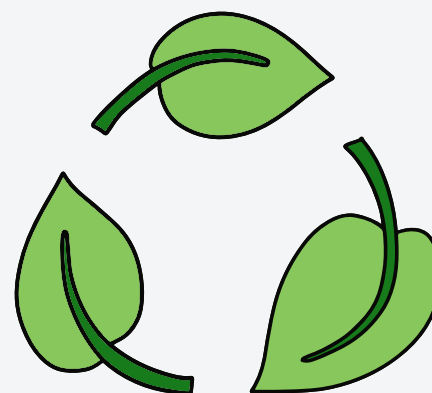
CONTACT WITH NATURE



SOLARITY AND RESPECT FOR OTHERS



**FACE-TO-FACE SOCIALISATION,
TEAMWORK**



**EDUCATION FOR SUSTAINABLE
DEVELOPMENT**

www.forestalparktenerife.es

SCHOOL YEAR 2023 - 2024



BENEFITS OF VISITING FORESTAL PARK TENERIFE



Physical activity in the open air makes it possible to:

- Increase **psychomotor skills** and spatial intelligence.
- Promote **cognitive abilities** (attention, concentration, memory, etc.).
- Increase the development of **creativity**.
- **Reduce stress and anxiety**.
- Increase **confidence, self-esteem and social skills**.
- Increase **well-being and general health**.

Teamwork, socialisation, self-improvement and sharing memorable experiences.

We get out of our comfort zone and work as a team to have fun overcoming original challenges and dynamics.

Students help each other to live an unforgettable experience.



"Digital detox. Share emotions and not publications.

In Forestal Park Tenerife mobile phones are left in the backpack because there is no coverage, we turn off the screens and connect with our companions and with nature.

www.forestalparktenerife.es

SCHOOL YEAR 2023 - 2024

SAFETY FIRST

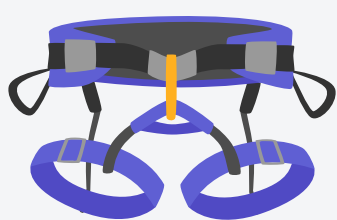


Our aim is that our visitors always **have fun under the highest possible security**, that's why we have the following elements:



Professional and qualified staff. Our staff equips the participants, gives the safety talk and monitors from the ground that the adventurers enjoy the routes and the dynamics safely. We work under the system of supervised autonomy.

Forest Experience's "continuous lifeline" safety system. In our high ropes and zip lines we work with a safety system that allows participants to connect at the start and cannot disconnect until they land back on the ground. Always connected, from start to finish.



PETZL brand personal protective equipment and all safety elements are CE-certified.

Annual certification by an external company of the facilities and the phytosanitary condition of the supporting trees. In addition to daily review of all safety elements and the state of the facilities.



Civil Liability and Accident Insurance.

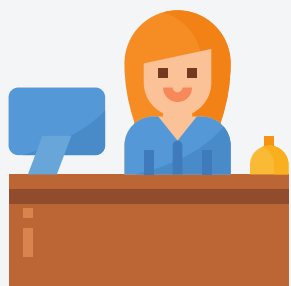
www.forestalparktenerife.es

SCHOOL YEAR 2023 - 2024

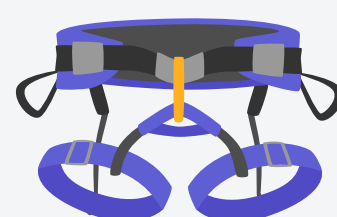
HOW DOES THE ADVENTURE UNFOLD?



1



WELCOME AND CHECK-IN
AT OUR RECEPTION



2

EQUIPMENT AND
GROUP PHOTO



3



SAFETY TALK AND
INITIATION CIRCUIT

SAFETY FIRST

4

ENJOY OUR HIGH ROPES AND GIGANTIC ZIP
LINES



www.forestalparktenerife.es



WHAT ACTIVITIES CAN BE CARRIED OUT?

1

HIGH ROPES AND ZIP LINES

Recommended from 4th grade Primary to 2nd Baccalaureate.

From 5 years old and 1.10m tall.

Maximum weight: 110kg

Duration: 3 hours (approximately half an hour of training and 2 and a half hours of fun on the different routes).



Dear adventurers, we are happy to announce that Forestal Park Tenerife reopens its doors so that you can come and enjoy a unique extracurricular excursion. Circuits such as La Gomera, La Graciosa or Fuerteventura are temporarily inactive, but fun and adrenaline are guaranteed in the rest of the circuits with the best team you can imagine.

Easy and Medium Circuits (>1,10m high, > 1st Primary)

Difficult and Extreme Circuits (>1,45m high, > 1stESO)

Forestal Park Tenerife monitors the participants from the ground. Therefore, adult supervisors must comply with the following ratios and accompany the children at height:

- 1 adult for every 3 children between 5 and 7 years of age.
- 1 adult for every 5 children between 8 and 9 years of age.
- 1 adult for every 10 children between 10 and 12 years of age.
- 1 adult for every 12 children from 13 years of age (it is not necessary for them to be on board, but they must be supervising their group).

SCHOOL YEAR 2023 - 2024

WHAT ACTIVITIES CAN BE CARRIED OUT?



2

WORKSHOPS AND GYMKHANAS ON LAND, EDUCATION FOR SUSTAINABLE DEVELOPMENT

From Infant Education to 2nd Baccalaureate.

Duration: 2 hours / workshop



IN PURSUIT OF THE SUSTAINABLE DEVELOPMENT GOALS

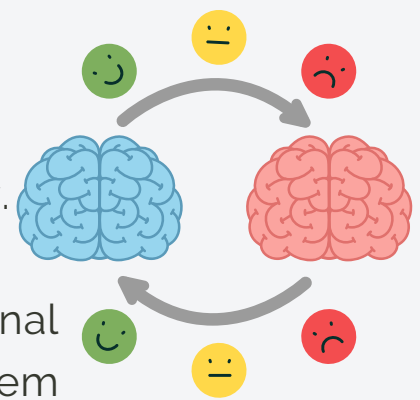
Recommended from 6th grade Primary to 2nd Baccalaureate.

Orientation and thrilling tests to find a great treasure, the secret to eradicate poverty, protect the planet and ensure prosperity for all (United Nations Sustainable Development Goals).

THE THRILL HUNTER

Recommended for children from Pre-school to 6th Grade Primary.

Discover emotions through games that work on emotional intelligence. Become an emotion hunter and learn to manage them with your class.



WORK AS A TEAM "TRABAJA EN PIÑA"



Recommended from 5th grade Primary to 2nd Baccalaureate.

Gymkhana with tests to encourage the acquisition of social skills and abilities, developing teamwork and cooperative interpersonal relationships. Conflict resolution and creativity to overcome the tests will be key skills.

SUPER EXPLORERS

Recommended for children from Pre-school to Primary 3.

Do you know how to organise your backpack and everything you need for hiking and camping? Fun activities and a trail around the park to learn how to enjoy nature independently, safely and sustainably.



CONSIDERATIONS

- All workshops can be adapted according to the age of the participants.
- If you want to work on other objectives, tell us your idea and we will create a personalised workshop (book at least 7 days in advance).

www.forestalparktenerife.es

SCHOOL YEAR 2023 - 2024



DO YOU WANT TO SPEND THE WHOLE DAY?

If you want to spend the whole day at Forestal Park Tenerife, you can combine two activities, for example:

- Start the morning with a fun workshop in the middle of nature (2 hours).
- Have lunch in our picnic area (you can bring your own food or ask our Reservations Department what food options we can offer you).
- Enjoy tree climbing and zip-lining (3 hours).



SERVICES OF FORESTAL PARK TENERIFE



OUTDOOR PICNIC AREA



BATHROOMS



FREE PARKING



BOTIQUIN



www.forestalparktenerife.es

SCHOOL YEAR 2023-2024



INCLUSIVE EDUCATION

At Forestal Park Tenerife we want all students, with or without disabilities or difficulties, to learn together. Therefore, if there are members of your group who need some kind of support, talk to our Reservations Department to provide the appropriate support and to enjoy a totally satisfactory experience.

ACTIVITY SUITABLE FOR PEOPLE WITH REDUCED MOBILITY?

The height circuits and zip lines are not adapted for wheelchair users. However, the reception area and a toilet are wheelchair accessible, so you can come and enjoy the activities on the ground.

If you are limited in your mobility but do not use a wheelchair, you may be able to enjoy the circuits at height and the zip lines, depending on the degree of limitation of the student. Please consult our Reservations Department and explain your case.



www.forestalparktenerife.es



SCHOOL YEAR 2023-2024

DO YOU WANT TO MAKE AN EVENT FOR THE TEACHING STAFF?

If you want to celebrate a team meeting in a different environment enjoying an outdoor day, check out our activities for adult groups.



CONTACT OUR RESERVATIONS DEPARTMENT



+34 630 385 742



reservas@forestalparktenerife.es



[@forestalpark_tf](https://www.instagram.com/forestalpark_tf)



[Forestal Park Tenerife](https://www.facebook.com/ForestalParkTenerife)



[@forestalpark_tf](https://www.tiktok.com/@forestalpark_tf)



[Forestal Park Tenerife](https://www.facebook.com/ForestalParkTenerife)

www.forestalparktenerife.es